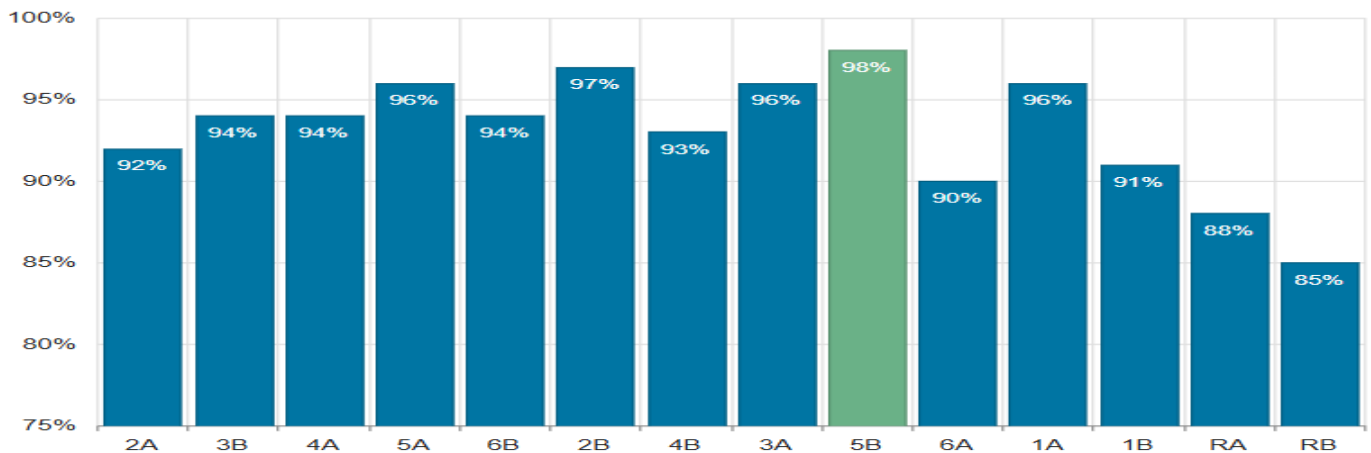




# Osborne Primary School

## Attendance Newsletter

### Week ending 21st March 2025



Our attendance target is 96%  
 Whole school Attendance for this week is 93%  
 Attendance Year to date is 93.6%



**For further support with attendance matters visits to school are warmly welcomed.**  
**Mrs Slimm will be happy to help.**


**School start and finish times**

Reception & Year 1 - Gates CLOSE at 8.49am  
 Year 2, 3, 4, 5 and 6 - Gates CLOSE at 8.54am

Reception & Year 1 – collection is 3.20pm  
 Year 2,3,4,5 and 6 – collection is 3.25pm

**Please ensure your children arrive on time to school and are collected on time.**

Please use the following contact details for any attendance, absence, or medical appointment related issues: [attendance@osborne-pri.sch.uk](mailto:attendance@osborne-pri.sch.uk) or call the office on 0121 464 3346.



This week a total of **335/410** children received 96% - 100% attendance.

**Congratulations to you all!**  
 At the end of the academic year all children with above 96% attendance overall will have a golden ticket added to our raffle for a chance to win a fabulous prize.

Polite reminder

**Please report ALL absence**

**It is parent/carers legal responsibility to report their child/ren absent from school. Failure to do this may result in the absence being unauthorised.**