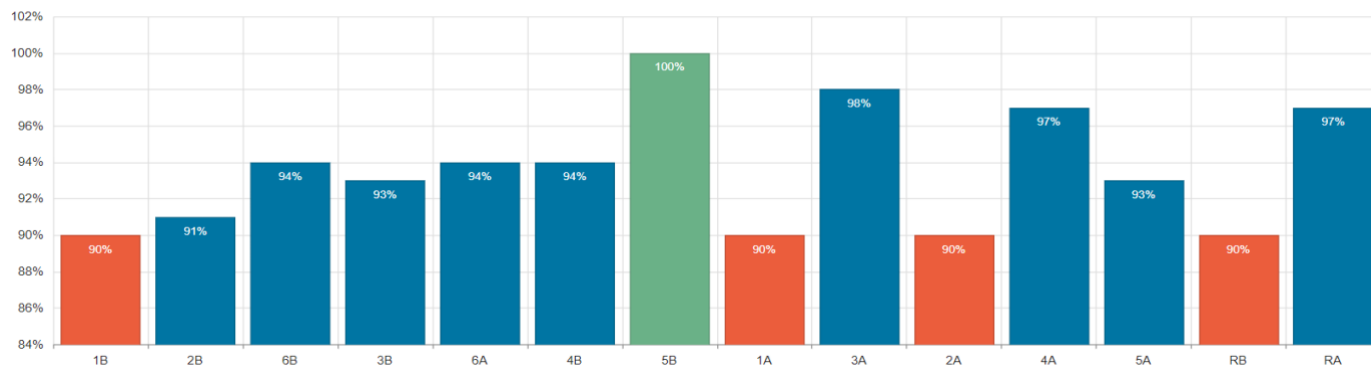




Osborne Primary School

Attendance Newsletter

Week ending 23rd February 2024

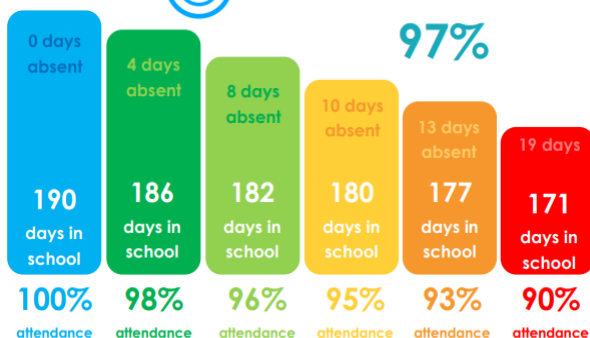


Whole school Attendance for WE 9.2.24 is **93.6%**
Attendance Year to date is **93.4%**



Our School Attendance Target is

97%



Best chance of academic success and in later life.

Poor attendance - less likely to succeed academically/in later life.

Serious impact on education and reduced life chances.

Our Attendance superstars this week are:

5A – 100%

What an achievement!



This week a total of **346/416** children received 97% - 100% attendance.

Congratulations to you all!

At the end of half term all children with above 97% attendance will have a golden ticket added to our raffle for a chance to win a fabulous prize.

Over the last term we have seen a large increase in the number of Leave In Term Time requests. We are unable to authorise any request unless there are *exceptional* circumstances. Please consider carefully if the leave is for an exceptional circumstance. Unauthorised leave in term time may result in a Penalty Notice being issued or legal action taken by the Local Authority.

DID YOU KNOW? A two week holiday in term time means that the highest attendance you can achieve is 94.7%

175 days off school per year.

Use this time for holidays, appointments etc.

Please use the following contact details for any attendance, absence, or medical appointment related issues: attendance@osborne-pri.sch.uk
0121 464 3346.

Families are welcome to visit school to discuss any concerns further. If you require support, please ask to speak to Mrs Slimm, our school Attendance Officer or Mrs Brookes, our Family Support Worker.

