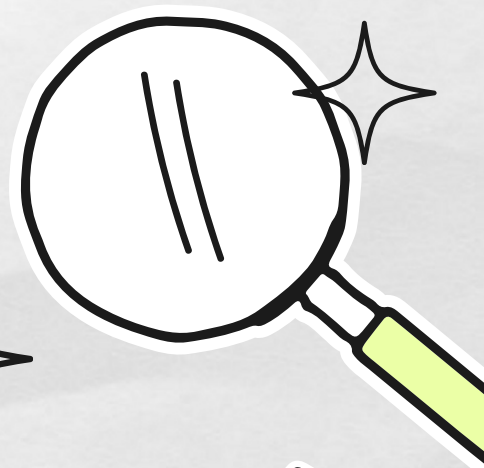


# KEEPING SAFE NEWSLETTER 1 NOVEMBER 2023

OSBORNE PRIMARY SCHOOL

## POSITIVE PARENTING

At Osborne we understand that parenting is hard work! It can be particularly difficult when your child's behaviour is challenging. As practitioners we never advise physical chastisement or smacking as it can be frightening for your child and can impact on your relationship with them. Physical chastisement can also impact on your child's self esteem and mental health. You can visit <https://learning.nspcc.org.uk> to access some positive parenting techniques. You can also pop and see us at school if you are experiencing difficulties managing your child's behaviour at home.



## USEFUL CONTACTS

### Domestic Abuse

Women's Aid: 0808 800 0028

<https://bswaid.org>

### Gambling Support

0300 456 4293

<https://aquarius.org.uk/our-services/adult-services/gambling/>

### Drugs & Alcohol Support

0121 227 5890

[www.changegrowlive.org/drug-and-alcohol-service-birmingham](http://www.changegrowlive.org/drug-and-alcohol-service-birmingham)

### Early Help For Families

0121 748 8199

<https://www.compass-support.org.uk/our-services/early-help-compass-support/>

### Shelter

Shelter Housing support and Advice drop in sessions at your local Children's Centre  
Free homeless, housing, temporary accommodation support

Bookable 10 minutes drop in session are as follows



Featherstone Children's Centre

29 Highcroft Road, Erdington,  
Birmingham, B23 6AU  
0121 752-1870

9/05/23 9.00-12.00 Tuesday only  
12/06/23 9.00-12.00 Monday  
10/07/23 9.00-12.00 Monday  
14/08/23 9.00-12.00 Monday  
11/09/23 9.00-12.00 Monday  
9/10/23 9.00-12.00 Monday  
13/11/23 9.00-12.00 Monday  
11/12/23 9.00-12.00 Monday



Lakeside Children's Centre

Lakes Road Erdington, Birmingham,  
B23-7LY  
0121 752-1970

26/05/23 9.00-12.00 Friday  
23/06/23 9.00-12.00 Friday  
28/07/23 9.00-12.00 Friday  
25/08/23 9.00-12.00 Friday  
22/09/23 9.00-12.00 Friday  
27/10/23 9.00-12.00 Friday  
24/11/23 9.00-12.00 Friday  
22/12/23 9.00-12.00 Friday

# CHILDREN'S CENTRES

We are fortunate to have 3 local children's centres who can support our families with children under 5. They can support with a range of services, including stay and play, adult education, disability, housing and finances. You can contact your nearest children's centre using the contact numbers below or by visiting:  
[www.bhamforwardsteps.co.uk](http://www.bhamforwardsteps.co.uk)

**Spurgeons**  
Together with families

## CONTACT YOUR LOCAL CHILDREN'S CENTRE

Castle Vale Children's Centre,  
Yatesbury Avenue, Castle Vale,  
Birmingham, B35 6DU, 0121 7521920

Featherstone Children's Centre, 29  
Highcroft Rd, Birmingham, B23 6AU,  
0121 7521870

Lakeside Children's Centre, Lakes Rd,  
Birmingham, B23 7UH, 0121 7521970

FOLLOW US ON



@OSBORNEPRISCH

